

Health Innovation Showcase

Industry leaders in health and innovation

Businesses investing in Kirklees will find we're at the heart of the UK's leading centre for health and innovation – West Yorkshire.

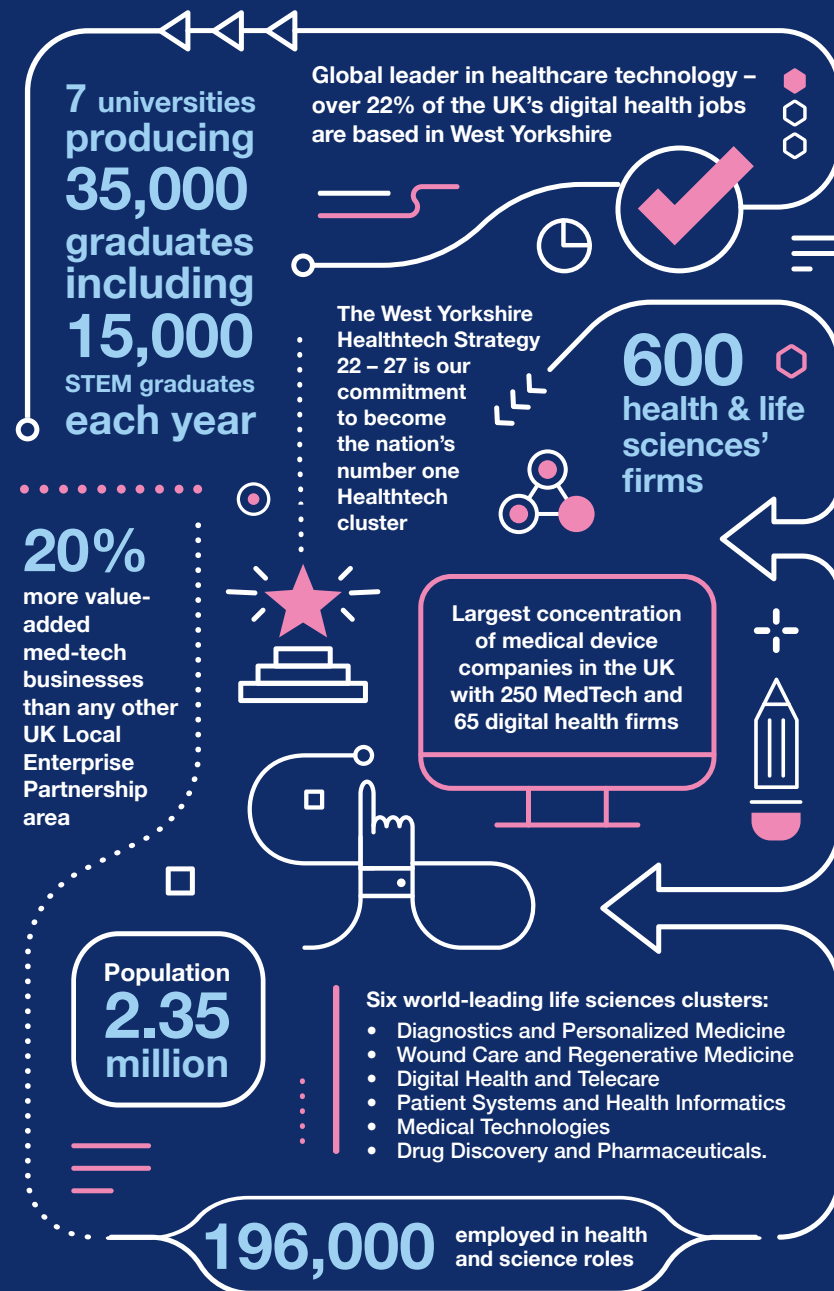
West Yorkshire is a unique ecosystem for its local connectivity, vast talent pool, national reach with government and the collaboration across private, public and voluntary sectors.

It's home to five of six national NHS offices including NHS England, NHS Leadership academy and the NIHR Clinical Research network, and an international leader in commissioning and delivering integrated health and social care services.

Hospitals, policy makers, universities, and industry partners across the health, social care and wellbeing ecosystem work together driving innovation in patient care, health and wellbeing.

By harnessing and building on these unique strengths West Yorkshire's health ecosystem is solving national and international challenges posed by demographic and social changes, helping people to be well and live well.

Kirklees offers unparalleled opportunities to launch and accelerate investor growth ambitions, with Huddersfield the heart of the evolution.



Note: Figures relate to West Yorkshire unless otherwise stated

The future is Huddersfield



Driven by the University of Huddersfield's new £250m National Health Innovation Campus, we're working in partnership to create the very best environment for health and wellbeing business success in Huddersfield.

Existing industry clusters in next generation medical devices, manufacture of medical instruments, medical services and pharmaceuticals and drugs discovery already deliver on a world stage.

We're home to innovative businesses like **Paxman** – pioneers in scalp cooling technology, **Kromek** – suppliers of radiation detection components and devices, **Thornton & Ross** – one of the largest pharmaceutical manufacturers in the UK, **Nanosonics** – innovative solutions to prevention infection, and **Reliance Precision** - providing high reliability, precision electro-mechanical solutions to the life sciences and pharmaceutical industries.

The University of Huddersfield's £250m National Health Innovation Campus

With an already impressive track record in professional courses and pioneering research, the University's National Health Innovation Campus (NHIC) will establish a unique health and wellbeing ecosystem. It will create the largest, most dynamic centre for workforce development and healthcare innovation in the North of England.

The first of up to seven buildings, uniquely built to platinum WELL Building Standards, opens in Summer 2024. The Daphne Steel building will house the **Health and Wellbeing Academy** with teaching spaces, offices, labs, gait analysis and simulation suites for the teaching of paramedics, physiotherapists, sports specialists and occupational therapists.

With the unique co-location of public, private and community partners, the complete Campus will enable world-leading in-the-field research and innovation, and their transfer into professional practise and industry delivering better health outcomes, and economic prosperity for all.

A TRUE LIVING LAB

Positioning health and wellbeing at the heart of place, partnership and prosperity



- World-leading research and clinical teaching facilities
- A national centre for the training of medical practitioners
- Real-life test beds to trial products and services within communities
- Tech-enabled simulated residential home
- Public-facing facilities to support social science and clinics in the fields of sports and physiotherapy, podiatry, parent and child and mental health.
- Co-located health centre with community hubs and 3rd sector providers to serve as a community research facility integrating services which are based on actual needs and social factors.
- Access to world-leading research and equipment, pathology labs, knowledge transfer and support for businesses.

The facilities on the new campus will provide for expansion in internationally excellent and connected projects in fields such as:

- AI applications in health
- Wound care
- Diagnostics, imaging and therapy
- Diabetes and multiple sclerosis interventions
- Mental health
- Leadership in healthcare
- Medical therapeutics and design for healthcare



Locate your business in Kirklees to take advantage of these incredible facilities, plus:

- Access to an incredible ecosystem of industry collaborators
- A highly experienced, well trained and readily available specialist regional workforce, with 23,000 people (14%) Kirklees residents, already working in health and social care – an increase of 15% in the last year.
- Wide-ranging world-class training in multiple areas of healthcare
- A highly developed sector supply chain and easy access to UK and international markets

Targeted support for investors

The transformational National Health innovation Campus is the catalyst for more regeneration, investment, jobs, and growth in the field of health and wellbeing in Huddersfield.

From 2024, investors will find targeted support across our health and wellbeing ecosystem - providing unrivalled prospects for partners to locate and grow in Huddersfield.

- Thrive: Health and Wellbeing Incubator
- West Yorkshire Life Sciences Investment Zone
- Health Innovation Network
- Health Innovation Maker Space



Thrive

Thrive: Health and Wellbeing Incubator

Thrive is a specialist start up incubation programme supporting health, wellbeing and lifescience business innovators, and individual entrepreneurs to turn their ideas into sustainable businesses.

Based at The Glass Box in Huddersfield, opposite the National Health Innovation Campus, eligible participants can access specialist advice, access research and development, grant and flexible premise solutions based on business need.

West Yorkshire Life Sciences Investment Zone

Along the Huddersfield Station to Stadium Corridor, the Investment Zone will benefit from a range of interventions which include skills training and business support. Innovators will benefit from proximity to the National Health Innovation Campus, which provides easy access to academia, research, and product testing.

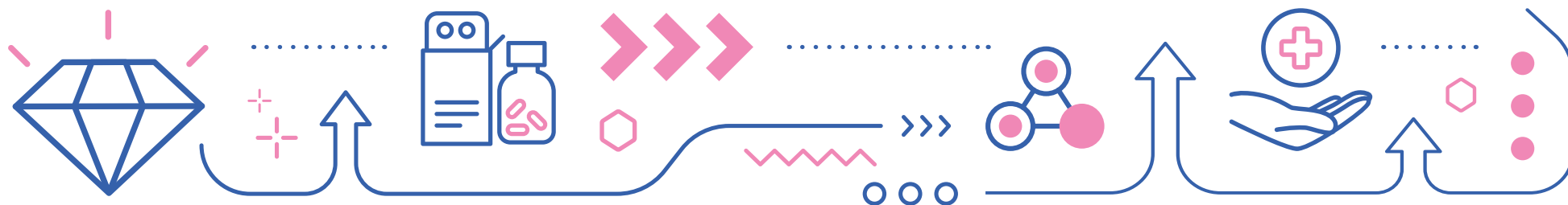
Health Innovation Network

Led by the University of Huddersfield, this unique membership ecosystem will foster innovation and collaboration between public, private, and third-sector stakeholders in health and wellbeing.

Health Innovation Maker Space

Huddersfield's 3M Buckley Innovation Centre will offer a bespoke health-tech makerspace and data visualisation facility. This space will facilitate access to emerging technologies and support business scale-up and growth.

In the future, this facility will be co-located with the Calderdale and Huddersfield NHS Trust, Locala and NHS England Community Diagnostic Hub at the **NHIC Health and Wellbeing Innovation Centre** fostering innovation and knowledge transfer, and de-risking access to new and emerging technologies for hi-tech startup and SME businesses in the healthcare sector.



Perfectly placed

Part of West Yorkshire, Kirklees is strategically located at the heart of the UK and the centre of the Leeds, Manchester and Sheffield City Region triangle - a pivotal central location within the UK's £339billion northern powerhouse.

Excellent transport networks include:

- Easy access to the M62, M1 & A1
- Direct rail links to Manchester and Leeds in 30 minutes, through to London in 2 hours
- Manchester and Leeds Bradford airports within 45 minutes, and a direct train to Manchester airport
- Seaports at Liverpool, Hull, Immingham and Teesport within 2 hours.



Why Kirklees

Kirklees is the perfect place for businesses to grow, innovate and improve efficiency.

We have industrial property solutions for investing businesses, including priority areas offering incentives and opportunities for development of employment space.

An integral part of our £8.35 billion GVA economy, 15,000 local businesses benefit from:



Commercial property rents up to c15% cheaper than competitor destinations



Grade A office space costing up to c63% less than nearby cities



Potential incentives to support delivery of employment space



Fast access to world-leading research and innovation centres



Affordable gigabit-speed internet services across 86% of the district



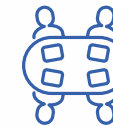
A highly developed sector supply chain and easy access to exporting



Access to 7 million consumers within one-hour's travel



Dedicated business support via Business Kirklees



A skilled local workforce, with significant labour-saving costs



A beautiful, vibrant place to live and work



Innovation in healthcare

There's a strong collaborative and open approach to the future of healthcare across the region and a high concentration of knowledge based, innovative health science organisations and academia.



Centres of Excellence

Businesses use the strength of Knowledge Transfer and research partnerships to develop, create and adopt ground-breaking new technologies, and accelerate their route to market.

- Tissue de-cellularisation technology
- Anaesthetic and respiratory technology
- Cardiovascular and vascular devices
- Ophthalmic devices and equipment
- Orthopaedic and prosthetic devices
- Dental and maxillofacial technology
- Use of AI in diagnosis and assessment
- Biomedical testing
- Drug discovery and delivery
- Regenerative devices
- Smart materials and polymers
- Novel manufacturing processes based on hybrid and multi-systems fabrication





The **University of Huddersfield** and wider academic network including the N8 Research Partnership have significant expertise and experience in clinical and applied health research and development, and clinical practice.

The **Leeds Institute for Data Analytics (LIDA)** is at the forefront of advanced data-drive health, urban analytics and AI research, education, training and technology in the field of data science and research.



Collaboration

Promoting collaboration between industry and academia, the **3M Buckley Innovation Centre** in Huddersfield helps businesses to innovate, connect and grow through access to knowledge, support, R&D and technology.

Within an hour, businesses can access a range of professional networks, and business support services in the biomedical, pharma, applied health and life sciences sectors.

- **Bionow (The Centre of Excellence for Life Sciences Ltd), Manchester**
- **Health Innovation Yorkshire and Humber (HIYH) , Wakefield**
- **West Yorkshire Innovation Network**
- **West Yorkshire Innovation Hub, a partnership between the NHS West Yorkshire Health and Care Partnership and (HIYH)**
- **Nexus, Leeds**
- **Bradford Institute for Health Research**
- **Advanced Wellbeing Research Centre at the Olympic Legacy Park, Sheffield.**

Skilled workforce

Business and educators work together to shape future talent, delivering skills, training and apprenticeships aligned to industry needs.

The University of Huddersfield's provision in fields such as nursing, midwifery and allied health has already grown by 60% in the past five years, with the new National Health Innovation Campus enabling a further 60% growth in the next five years.

The University already offers over 40 degree-level courses across numerous health and wellbeing disciplines, and specialised linked degrees such as a BEng in Medical Engineering Technologies; many include industry placements. It is the largest provider of apprenticeships in nursing and allied healthcare in the Yorkshire and Humber and is leading workforce transformation in health and social care.

Greenhead College is the number one A-Level college in Yorkshire, offering traditional A levels or equivalent certificates including medical science, health & social care, biology, chemistry, statistics, psychology and sociology.

Kirklees College is one of the leading apprenticeship providers in the UK. It offers 30 occupational courses training 1000 apprentices each year in first-class facilities, as well as T-Levels and 16-18 courses. Subjects include engineering, manufacturing, health and social care, science, sport and fitness.



Dedicated team

Our team are ready to offer information, organise site visits, create opportunities, remove barriers and open doors to support your business relocation or expansion project.

We have a bespoke service to support you on:

- Economic and market intelligence
- Access to local supply chains
- Links to networks, trade bodies and business groups
- Land, property and infrastructure support
- Business information, advice and support
- Finance, funding and incentives
- Assistance with recruitment, education and training

Get in touch...

James Barker - Inward Investment Project Officer
james.barker@kirklees.gov.uk

Jess Newbould - Inward Investment Project Officer
jess.newbould@kirklees.gov.uk





 businesskirklees.com/invest

 invest@kirklees.gov.uk

 01484 221000

